



**European Training Foundation**



**ETF30<sup>th</sup>**  
**ANNIVERSARY**  
1994–2024



**SKILLS ARE CHANGING**

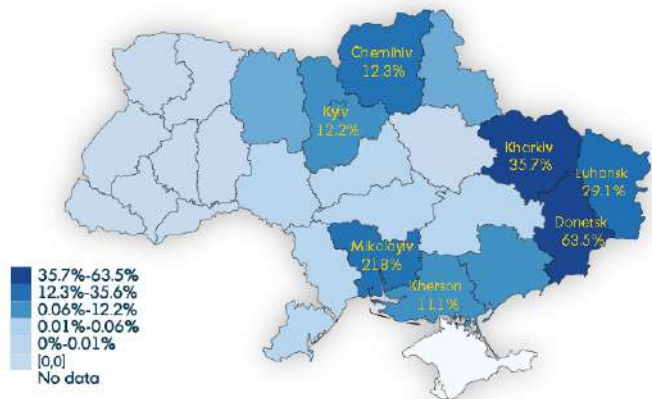


An aerial photograph of a city situated along a wide river. A long bridge spans the river, connecting the foreground to the city. On the right side of the river, a large, ornate cathedral with a green dome sits atop a hill. The city is densely packed with buildings, and the surrounding landscape is lush with green trees. The sky is filled with soft, white clouds, and the overall scene is bathed in the warm light of late afternoon or early morning.

**BOSNIA & HERZEGOVINA**  
**MOLDOVA**  
**MONTENEGRO**  
**SERBIA**  
**UKRAINE**



## Impact on educational infrastructure by region



3,798

Damaged and destroyed  
education facilities  
(12.1% of total)  
(Ukrainian MoES 21/02/24)



151

Damaged and destroyed  
vocational schools  
(18.3% of total)  
(Ukrainian MoES 21/02/24)



# FRAGILE CONTEXTS



The image features the European Union flag, which is a blue field with twelve yellow stars arranged in a circle. The flag is shown waving on a flagpole against a clear blue sky. The text "SUPPORT EU ACCESSION" and "THE ROLE OF HUMAN CAPITAL" is overlaid in white, bold, sans-serif capital letters at the bottom of the image.

**SUPPORT EU ACCESSION**  
**THE ROLE OF HUMAN CAPITAL**



# **THE ERA OF PARTNERSHIPS ROLES AND COORDINATION**





**WORKING TOGETHER**





# SKILLS AND GENDER





# **ALIGNING WITH EU PRIORITIES IN HUMAN CAPITAL DEVELOPMENT**



**CAREER**

**CAREER**

**CAREER**

**YOUTH GUARANTEE**

# ONLINE SURVEY

Your Experience



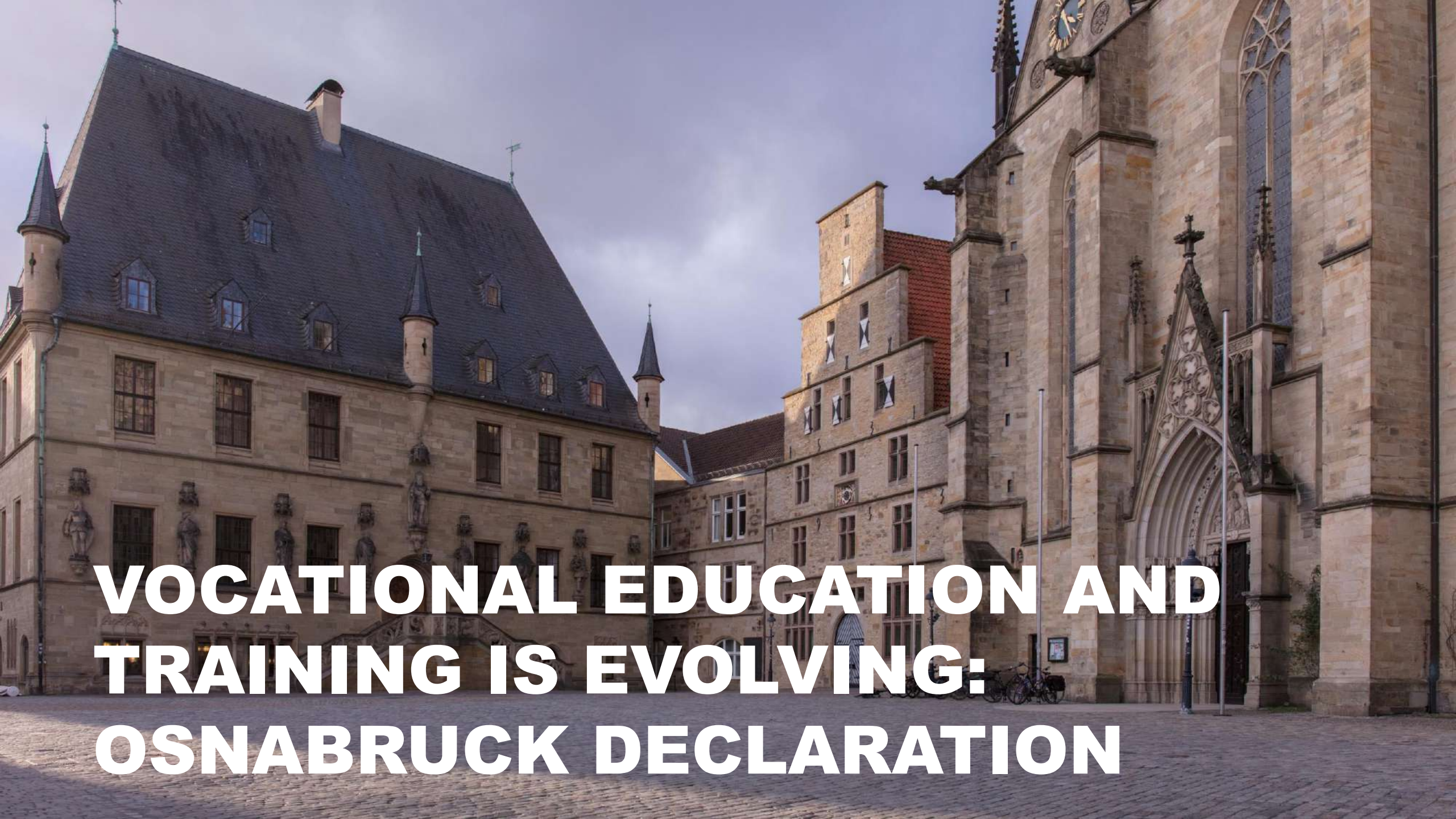
Are you satisfied with our service?

Service	Excellent	Good	Average	Poor	Very Poor
Purchase	<input type="radio"/>	<input type="radio"/>	<input type="radio"/>	<input type="radio"/>	<input type="radio"/>
Speed and reaction	<input type="radio"/>	<input type="radio"/>	<input type="radio"/>	<input type="radio"/>	<input type="radio"/>
Location	<input type="radio"/>	<input type="radio"/>	<input type="radio"/>	<input type="radio"/>	<input type="radio"/>
What can we do to improve our service?	<input type="radio"/>	<input type="radio"/>	<input type="radio"/>	<input type="radio"/>	<input type="radio"/>

Submit

# SKILLS & JOBS SURVEYS





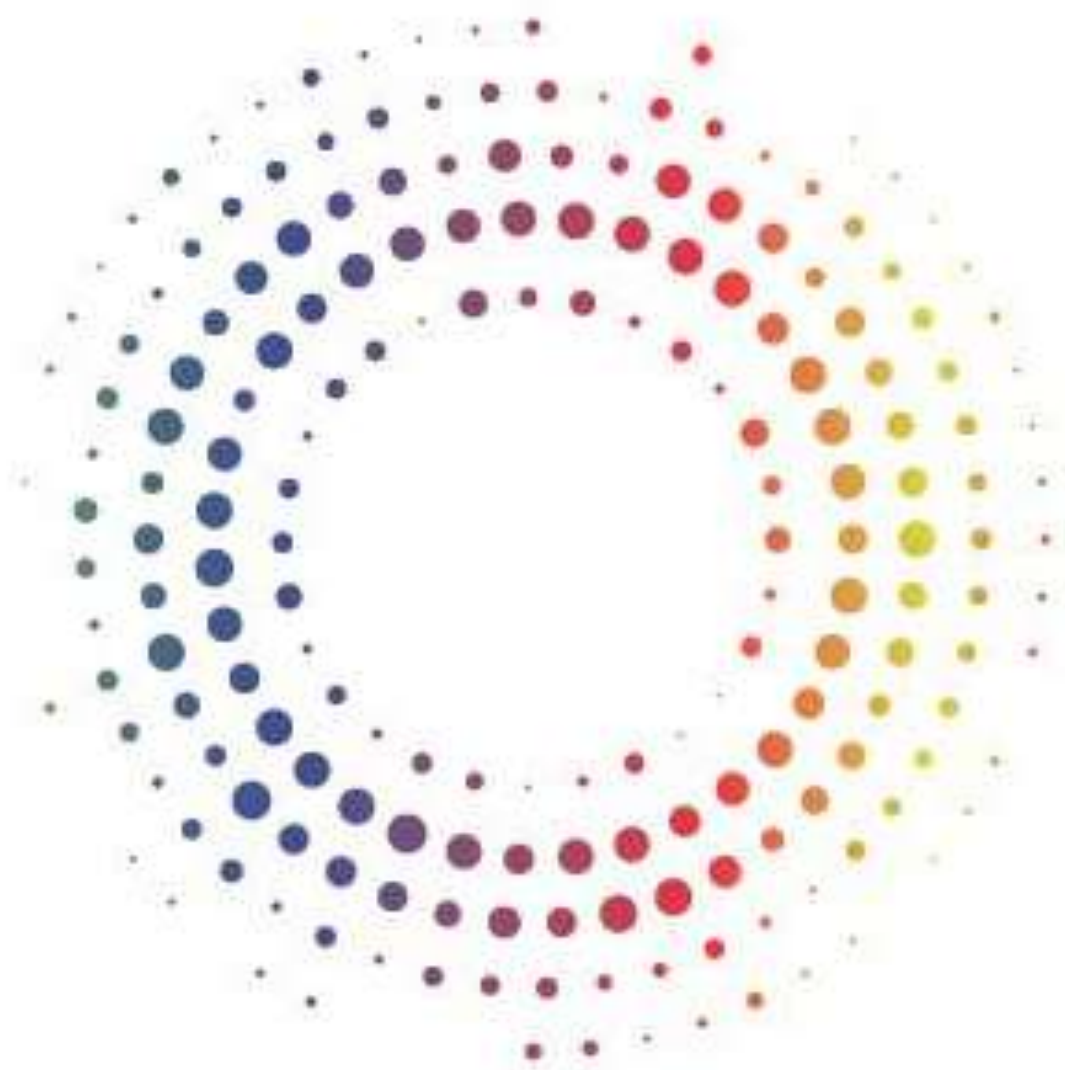
**VOCATIONAL EDUCATION AND  
TRAINING IS EVOLVING:  
OSNABRUCK DECLARATION**





Erasmus+





**ETF**  
**Network for**  
**Excellence**



# Where do I find more on Vocational Excellence?



Description of vocational excellence



Guidelines and toolkits



Vocational Excellence Library  
(stories, research corner, etc.)



Networking events & capacity building



Erasmus+: calls & projects



Policies



FAQ



<https://ec.europa.eu/social/vocationalexcellence>





# **INVESTING IN EDUCATION AND TRAINING - COOPERATION WITH INTERNATIONAL FINANCIAL INSTITUTIONS**





**COOPERATING WITH EU MEMBER  
STATES AND REGIONS**



The background of the image is a dark blue field filled with numerous thin, curved lines in various colors including blue, green, yellow, orange, and red. These lines sweep across the frame from the bottom left towards the top right, creating a sense of motion and depth. Interspersed among these lines are small, bright dots of the same colors, some appearing as single points and others as small clusters, further enhancing the abstract, futuristic feel of the composition.

**FUTURE = INNOVATION**



A silhouette of a hiker stands on a rocky mountain peak, holding a trekking pole in their right hand and raising their left fist in a gesture of triumph. The hiker is wearing a backpack. The background features a vast, hazy mountain range under a clear blue sky.

**UP FOR A CHALLENGE!**