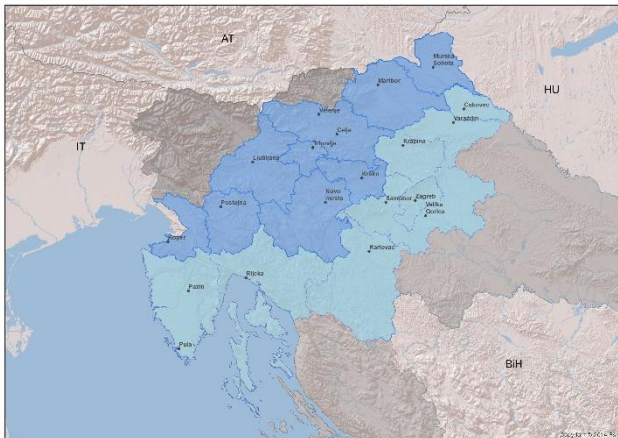


Embedding MRS in CBC Programmes

- On-line



WHAT IS IN OUR HANDS WHEN PROGRAMMING IS FINNISHED

PROCESS

- Consultation activities
- System setup
- Eligibility assessment
- State-Aid assessment
- Quality assessment
- Selection
- Implementation
 - Partner control
 - Project control
- Payments
- Recoveries

PERSONNEL

- Managing authority staff
- Secretariat staff
- First level control staff
- National authority staff
- Certifying authority staff
- Monitoring committee staff

THINGS TO CONSIDER

- Responsibility
- Knowhow
- Number of personnel
- Time constraints
- Available system
- Content interest (Conflict of Interest)

QUALITY ASSESSMENT

TASK	PERSONNEL
<p>Relevance for the area and programme</p> <ul style="list-style-type: none">• Alignment with the objectives and activities as described in the Call and programme document• Contribution to long-term policy objectives, relevant policies and strategies (MRS), and synergies with activities at European, national and programme level• Extent to which the project would reinforce and secure programme objectives• How relevant is the project for programme area and what difference can it bring	JS, NA

CONSULTATION ACTIVITIES FOR PROJECTS

TASK	PERSONNEL
Advertising of the programme – communication activities <ul style="list-style-type: none"> • Web page • Events • Face-to-face 	JS MA, NA, FLC, MC MA, JS, NA
Project consultations <ul style="list-style-type: none"> • Content of the project • Alignment with the programme and strategies 	MA, JS, NA MA, JS
Partner and partnership consultations <ul style="list-style-type: none"> • Partner eligibilitiy • Partner search 	JS, NA JS, NA
Project preparation <ul style="list-style-type: none"> • Usage of Jems • Project quality assurance (content, budget) 	JS JS, FLC

ON FIELD EXPERIENCE

Energy Efficiency

Project: GREEN Line (Interreg V-A SI-HU programme)

- Energy efficiency for public institutions
- **Energy accounting** – database, tools that make decision-making easier based on knowledge base (problems are trust and financial resources to describe more buildings into the database-sensors networks)
- **Pilot models** – examples of what to do/renew first for energy efficient buildings to reach carbon neutrality

ON FIELD EXPERIENCE PROBLEMS

Project: GREEN Line

- Extention of activities from pilot projects to regular activities
- Understanding of decision makers of the benefit to the environment
- Lack of funding opportunities and/or experts to implement activities on a large scale (funding not aligned to objectives)
- Strong investment elements needed (new technologies)



DISCUSSION

